

CERTIFICATE OF LOCATION OF GOVERNMENT CORNER

NORTHEAST Corner of Section 13, Township 108N, Range 39W

5th Principal Meridian, State of Minnesota, County of MURRAY

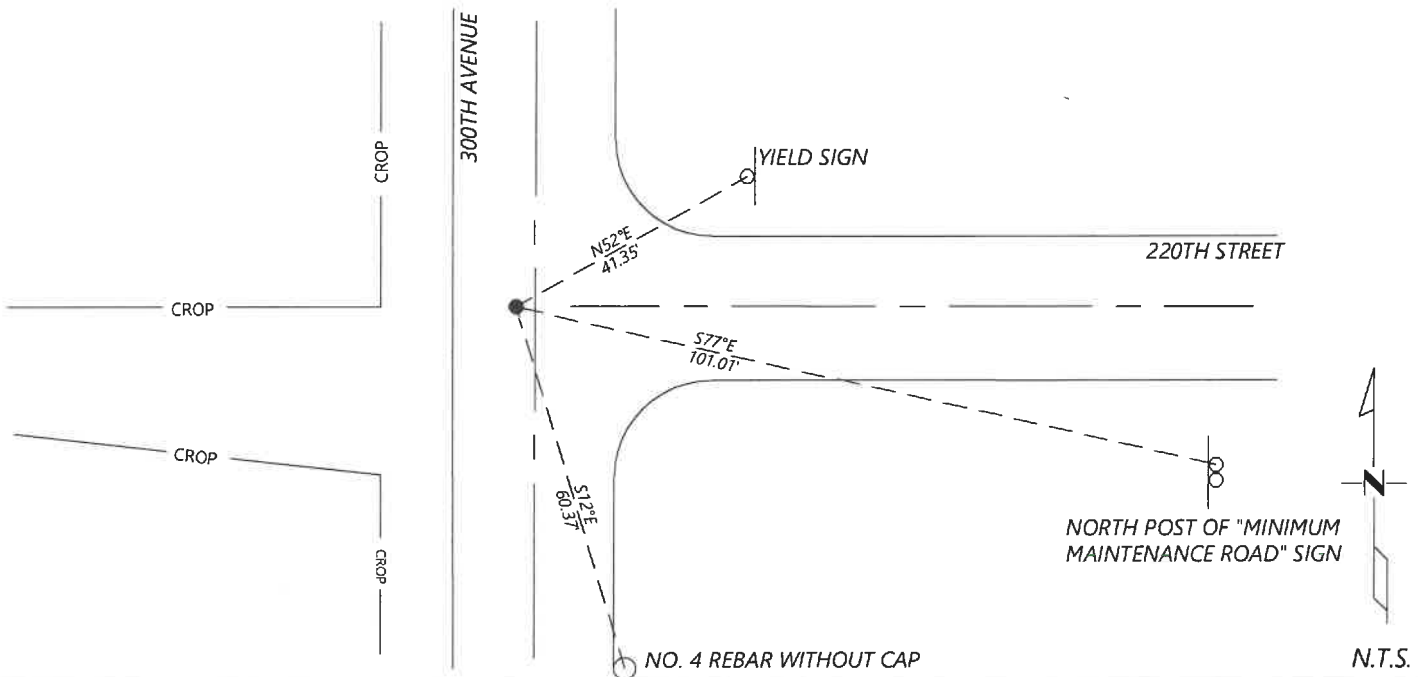
At the corner location shown on the sketch:

On 9/02/2020 found a 1/2" OPEN IRON PIPE, 0.7FT BELOW GRADE.
DATE

left monument as found lowered monument removed monument (explain)

On _____ placed a _____
DATE

SKETCH OF REFERENCE TIES



Statement of evidence for this corner location is on back of this page.

I hereby certify that this document was researched and prepared by me or under my direct supervision and that I am a licensed Land Surveyor under the laws of the State of Minnesota.

Signature [Handwritten Signature]

Date 6/17/2021 License No. 45874

Title:

- Land Surveyor Professional Engineer
 County Surveyor County Engineer

OFFICE OF THE COUNTY RECORDER

County of Murray

I hereby certify that this document was filed in the Co.

Recorder's office at _____ M. on the _____ day of _____ A.D. 20

County Recorder [Handwritten: Karen Brown]
 by JUN 22 2021, Deputy

DOCUMENT NO. _____

Statement of Evidence:

Northeast Corner of Section 13, Township 108 North, Range 39 West, 5th Principal Meridian, Murray County, Minnesota.

No GLO Notes.

Undated, Survey record for Section 13 shows that the government corner was found. A distance of 2644.0ft is shown to the East Quarter corner and 2629.4ft is shown to the North Quarter corner.

1900 Cottonwood County resurvey shows a distance of 2642ft to the West Quarter corner of Section 18 and 2651ft to the West Quarter corner of Section 7.

2013 April, A survey in Section 18 by Perry Zieske shows a found iron monument at the corner.

2020 September, Westwood Professional Services searched and found a $\frac{1}{2}$ " iron pipe at the corner. Position fits well to to the 2013 survey and also the 1900 Cottonwood County resurvey distances. I accepted the found monument and set reference ties.

Analysis of the recovered data, field evidence and survey measurements, indicates that the monument found is the correct perpetuation of this corner. For additional information concerning this corner please contact Westwood Professional Services.